

State of Tennessee, County of Washington  
 I, K. M. ADAMS, Clerk of the County, do hereby certify that the within and foregoing plat was recorded in my office on the 25th day of August, 1958, at 10:00 o'clock A.M. and that the same is a true and correct copy of the original as recorded in my office.  
 Witness my hand and the seal of the County of Washington, Tennessee, this 25th day of August, 1958.  
 K. M. ADAMS  
 Clerk of the County

**278**

- LEGEND:**
- ▲ PLANNED STRIKE BUILD
  - IRON PIV POINT
  - IRON PIV POINT
  - EXISTING SPRING ART
  - LIGHT TOWER
- 4. CURVE DATA:**
- ① R=500.00' Δ=40.00° T=40.00' L=42.89'
  - ② R=500.00' Δ=40.00° T=40.00' L=42.89'
- NOTE:**  
 ALL DISTANCES ARE IN FEET AND DECIMALS THEREOF.  
 APPROVAL OF THIS PLAT DOES NOT CONSTITUTE THE APPROVAL OF A SUBDIVISION UNDER THE SUBDIVISION REGULATION ACT, BUT THE FILING OF THE PLAT IS FOR LOCALITY PURPOSES.



**CONDOMINIUM PLAT**

**LIMITED EDITION**

**SECTION 5**

JOHNSON CITY REGIONAL PLANNING COMMISSION  
 TOTAL ACRES 0.6413  
 ACRES NEW ROAD DEWATER  
 OWNER WALT TITTLE, SR.  
 SURVEYOR CLARENCE ASSOCIATES, INC.  
 CIVIL DISTRICT 10TH  
 CLOSURE ERROR 1/8"=32.47'

SCALE 1" = 30 FT

**CERTIFICATE OF APPROVAL FOR RECORDING**

I HEREBY CERTIFY THAT THE SUBDIVISION PLAT SHOWN HEREON HAS BEEN FOUND TO COMPLY WITH THE SUBDIVISION REGULATIONS OF THE REGIONAL PLANNING COMMISSION AND THAT IT HAS BEEN APPROVED FOR RECORDING IN THE OFFICE OF THE REGISTERED CLERK OF THE COUNTY OF WASHINGTON, TENNESSEE.

Walt Tittle, Sr.  
 19 51

**CERTIFICATE OF APPROVAL OF WATER AND SEWERAGE SYSTEM**

I HEREBY CERTIFY THAT THE WATER SUPPLY AND/OR SEWERAGE SYSTEM SHOWN ON THIS PLAT IS IN ACCORDANCE WITH THE REQUIREMENTS OF THE CITY OF COUNTY PLANNING OFFICE OF THE AUTHORIZED REPRESENTATIVE.

**CERTIFICATE OF THE APPROVAL OF CITY ENGINEER**

I HEREBY CERTIFY THAT THE PLAT SHOWN AND DESCRIBED HEREON IS A TRUE AND CORRECT COPY OF THE ORIGINAL AS SUBMITTED TO THE CITY ENGINEER'S OFFICE AND THAT THE AMENDMENTS HAVE BEEN MADE AS SHOWN HEREON.

19 51

**CERTIFICATE OF ACCURACY**

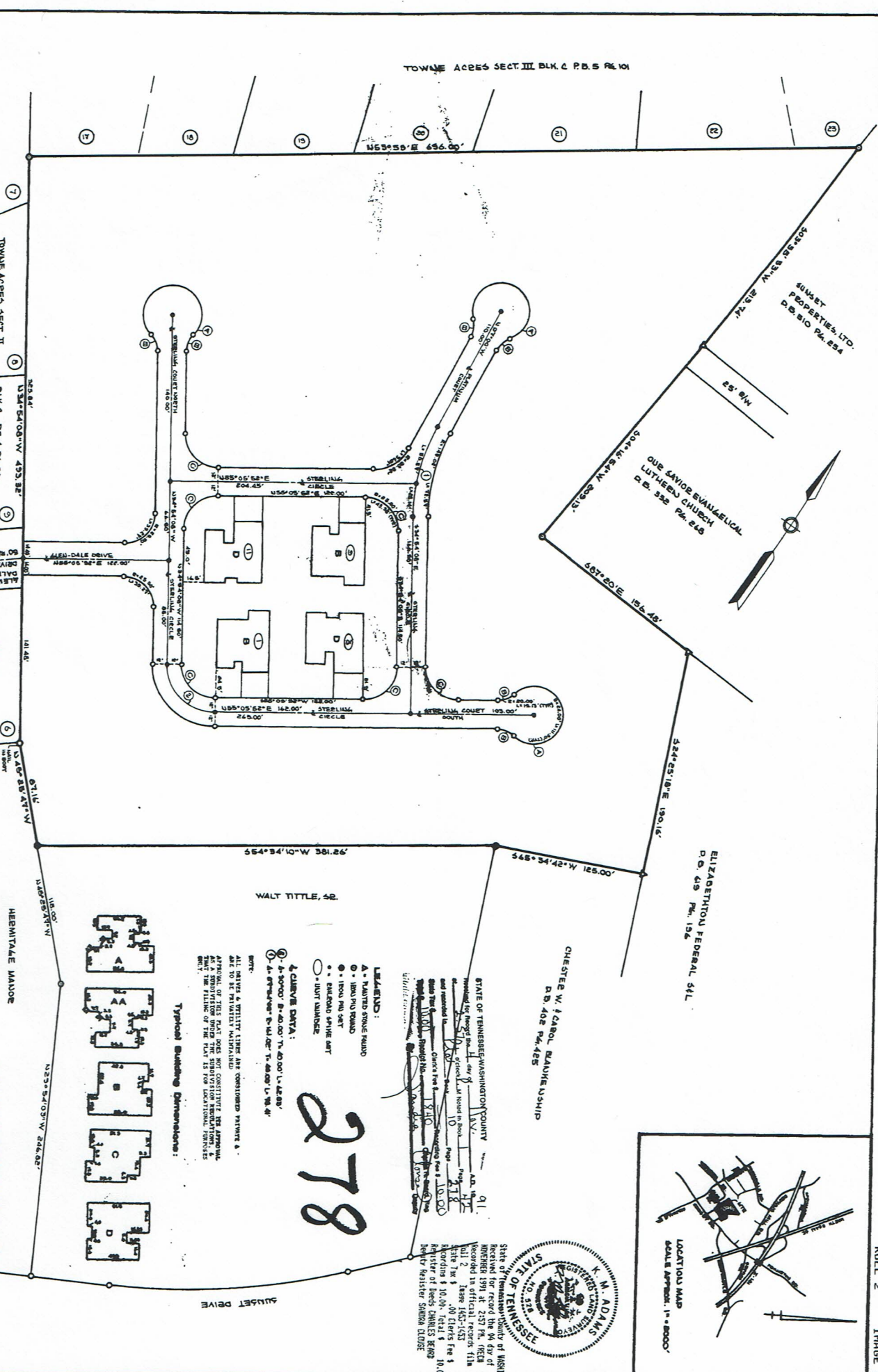
I HEREBY CERTIFY THAT THE PLAT SHOWN AND DESCRIBED HEREON IS A TRUE AND CORRECT COPY OF THE ORIGINAL AS SUBMITTED TO THE REGIONAL PLANNING COMMISSION AND THAT THE AMENDMENTS HAVE BEEN MADE AS SHOWN HEREON.

19 51

**CERTIFICATE OF OWNERSHIP AND RESERVATION**

I HEREBY CERTIFY THAT I AM THE OWNER OF THE PROPERTY SHOWN AND DESCRIBED HEREON AND THAT I HAVE CONVEYED THE PLAT OF SUBDIVISION WITH ALL RIGHTS RESERVED TO THE CITY OF COUNTY PLANNING OFFICE OF THE AUTHORIZED REPRESENTATIVE AND THAT I HAVE MADE OTHER PLACES TO BE MADE AS SHOWN HEREON.

19 51



TOWNE ACRES SECT. II  
 BLK. C P. 4 P. 5 P. 6  
 BLK. A  
 BLK. C P. 4 P. 5 P. 6  
 BLK. A  
 BLK. C P. 4 P. 5 P. 6  
 BLK. A